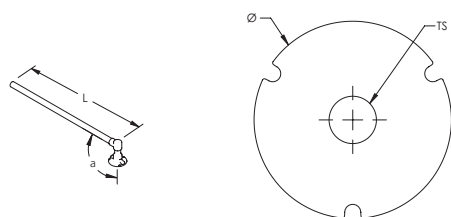


Earthbridge DB, One Stud, Solid Round Steel, 90° Angle – DB10K (166130)



Earthbridges are assemblies made from a high-quality conductive earthpoint (connecting terminal) and various types of conductors. The ERICO® CADWELD® exothermic connection process is used to combine them together, forming a highly corrosion resistant and long-lasting assembly.

- Long-lasting design
- Low ground resistance and impedance
- Superior electrical conductivity and resistance to corrosion
- Electrically and mechanically robust and reliable
- Easy to install



Part Number	DB10K
Article Number	166130
Material	Copper Steel
Earthpoint Type	DB, One Stud
Conductor Type	Solid Round Steel, 90° Angle
Conductor Size	16 mm Diameter
Length (L)	500 mm
Diameter (Ø)	50 mm
Thread Size (TS)	M10
Angle (a)	90°
Standard Packaging Quantity	1 pc
EAN-13	3479771661302

Includes (1) brass bolt, (1) brass washer, (1) plastic cap, and (1) protective label.

WARNING

ERICO products shall be installed and used only as indicated in ERICO's product instruction sheets and training materials. Instruction sheets are available at www.erico.com and from your ERICO customer service representative. Improper installation, misuse, misapplication or other failure to completely follow ERICO's instructions and warnings may cause product malfunction, property damage, serious bodily injury and death.

Copyright © 2015 ERICO International Corporation. All rights reserved.

CADDY, CADWELD, CRITEC, ERICO, ERIFLEX, ERITECH, and LENTON are registered trademarks of ERICO International Corporation.

